

PPC-1000-LL LOW LATENCY RADIO



FOR FREQUENCY BANDS
71-76/81-86 GHZ
37.0-40.0 GHZ



PRODUCT SPECIFICATIONS 1 Gigabit Ethernet Wireless Link

All information from this document is protected by the related copyright, patent, or intellectual property right.

ELVA-1 has the exclusive right to change this information in order to improve performance or usability of the described products.

PPC-1000 is a trademark of ELVA-1. All other trademarks or product names are the property of their respective owners.

Copyright © 2016-2019, ELVA-1

For any request please contact us by E-mail: sales@elva-1.com

Tx / Rx Specs

Model	PPC-1000-E/LL	PPC-1000-Ka/LL
Frequency range	71-76/81-86 GHz (E-band) 74-76/84-86 GHz for Czech Republic	37.0-40.0 GHz (Ka-band)
Throughput	1000 Mbps Full duplex	1000 Mbps Full duplex
Latency	45ns from SFP socket to antenna port (on one ODU)	
Channel Bandwidth	1250 MHz	
Modulation	QPSK	
MTBF	150 000 hours	
Max Distance	up to 20.0 km (12.4 miles) with 2ft antennas at clear sky	up to 20.0 km (12.4 miles) with 2ft antennas at clear sky
Max output power	+25 dBm (315 mW)	+27 dBm (500 mW)
Rx Sensitivity @ 10 ⁻⁹ BER	-64 dBm	-65 dBm
System Gain	89 dB	92 dB
Management	SNMP v.2; MIB-II and Enterprise MIB; WEB; CLI; Telnet	
Ethernet Interface	1 × SFP slot (1000Base-X)	
Management Port	100 Base-Tx (RJ – 45)	
Forward Error Correction	n/a	
Polarization	Vertical / Horizontal	

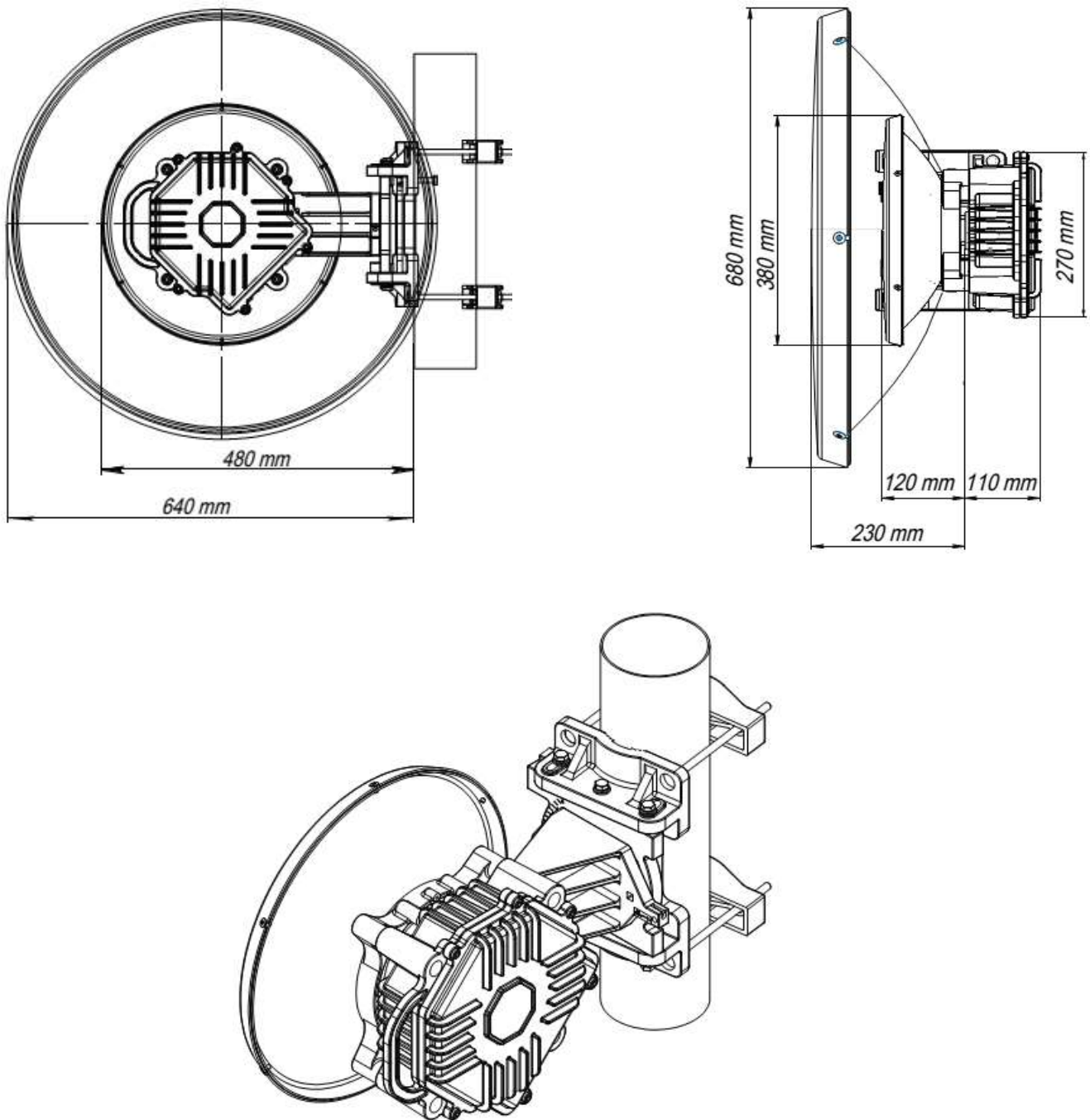
Antenna

Antenna Type	Cassegrain type antenna with radio-transparent radome	
Antenna Gain/Beamwidth	71-76/81-86 GHz (E-band)	40.5-43.5 GHz (Q-band)
1ft antenna	45 dB/0.7°	38 dB/1.5°
2ft antenna	51 dB/0.35°	44 dB/0.7°

Power / Environment

Power Supply AC	Input 88-132 / 176-264 Volts, 50/60 Hz
Power Consumption (for one radio)	45 W (+60 W when heater is switched on)
DC Power	36 to 60 Volts DC
Power Connection	IP-67
Operational Temperature	-50°C to +60°C / -58°F to 140°F
Humidity	Up to 100%

1.1 E-BAND PPC-1000-LL DRAWING



1.2 KA-BAND PPC-1000-LL DRAWING

