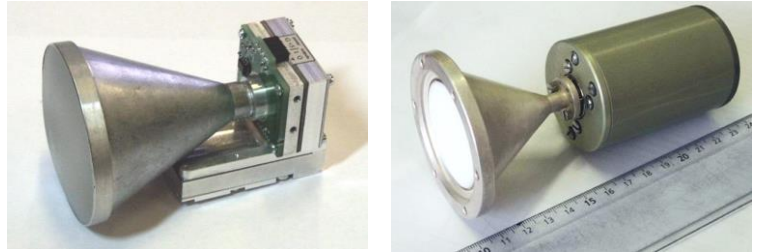


- High accuracy
- Compact sized

- High directivity with small antennas
- Equipped with antennas by customer's choice

Applications

- Robotic sensors
- Instruments and test equipment
- Subsystems and assemblies
- Industrial quality assurance and process controlling systems

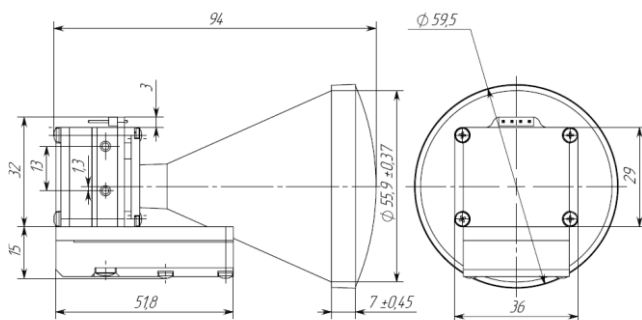


Specifications

Model No	DSP-24/30	DSP-24/100	DSP-94/5
RF frequency	24.150 GHz	24.150 GHz	94.0 GHz
Transmitter output power	30 mW	100 mW	5 mW
Receiver conversion loss	5 dB (typical)	5 dB (typical)	12 dB (typical)
Noise figure	8 dB	9 dB	20 dB
IF bandwidth	0.1 to 700 kHz	0.1 to 700 kHz	0.1 to 700 kHz
Outputs	IQ	IQ	IQ
IF LNA gain	20 dB	20 dB	20 dB
Antenna 3 dB beamwidth	12 degrees	12 degrees	Upon request
Antenna gain	18dB	18dB	-
Antenna side lobe level	-22 dB (maximum)	-22 dB (maximum)	-
Polarization	right hand circular	right hand circular	linear
Spurious and harmonics	-40 dBc	-40 dBc	-60 dBc
$\Delta F/\Delta T$	0.10 MHz/°C	0.10 MHz/°C	0.10 MHz/°C
$\Delta P/\Delta T$	0.01 dB/°C	0.01 dB/°C	0.01 dB/°C
DC bias	+5.0 V / 100 mA	+5.0 V / 120 mA	+12V / 100 mA +24V / 250 mA
Operation Temperature	-20 - +65C	-20 - +65C	-20 - +65C
Dimensions	See drawing	See drawing	Cylinder 50/75mm

Outline Drawings

DSP-24/xx.



DSP-94/5

